



INSTALLATION INSTRUCTIONS

Rider Foot Peg Relocation Kit

1TP-F14A0-V0

XVS95CE (Bolt)



⚠WARNING

This accessory should be installed by an authorized Star dealer or a qualified mechanic. Improper installation could result in loss of control and an accident with severe injury or death.

NOTICE:

This accessory requires the Service Manual for proper installation. Be sure to have the Service Manual on hand before beginning installation.

DEALER OR INSTALLER:

These instructions contain important information for future reference and must be given to the customer.

⚠WARNING

Read and understand these instructions completely before installation to avoid possible injury, as well as possible damage to the accessory or vehicle.

WARRANTY INFORMATION:

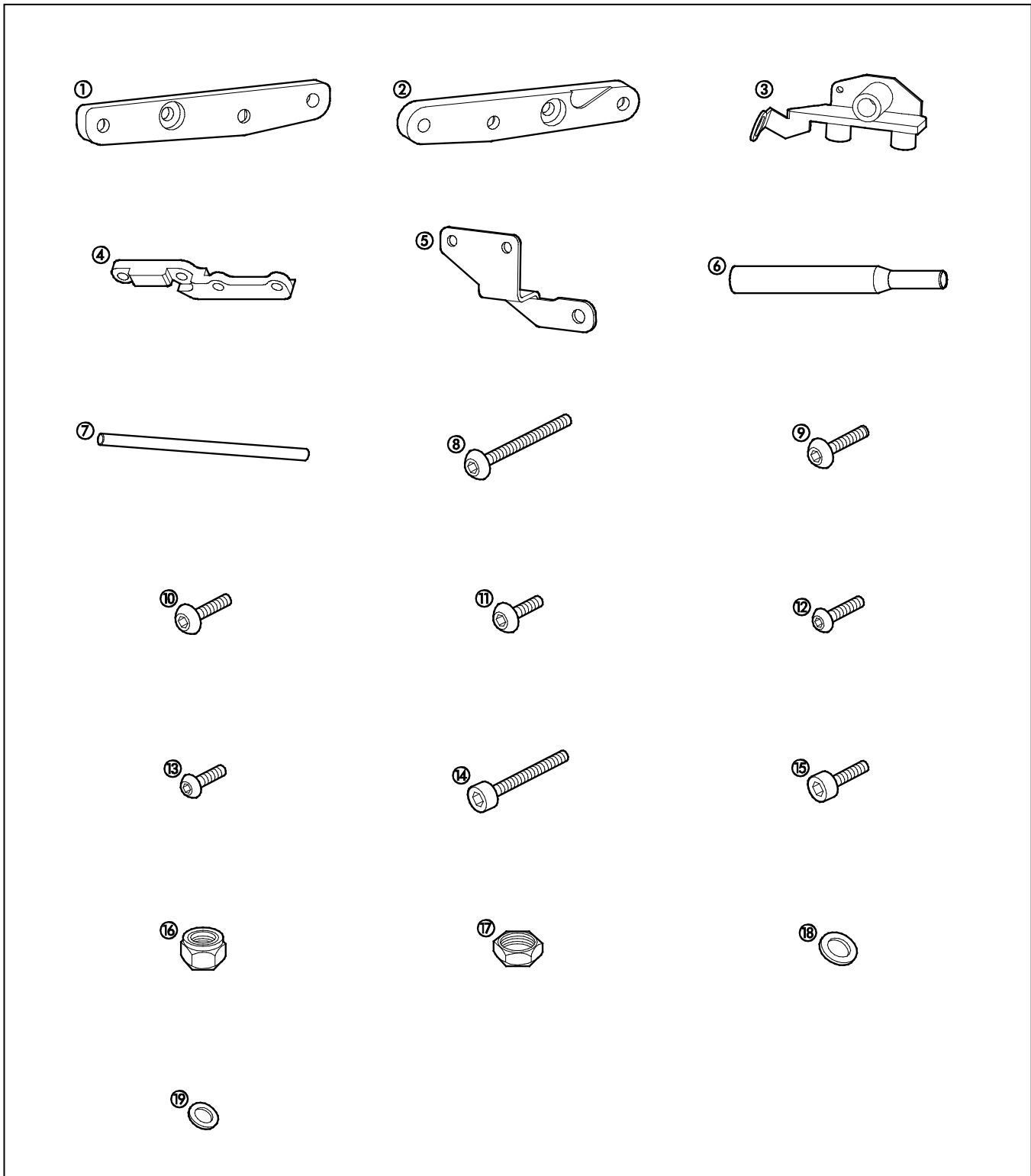
Genuine Star Custom Accessories are covered by a one-year limited warranty against defects in material or workmanship. Labor for replacement of defective components is not covered. See your Yamaha dealer for a copy of the warranty statement.

PARTS LIST:

This kit contains the following components. Before beginning installation, confirm there are no missing or damaged components.

| Item | Part Number | Description | Qty |
|------|--------------|--|-----|
| -- | 1TP-F14A0-V0 | Rider Foot Peg Relocation Kit | -- |
| (1) | * | LH foot peg relocation bracket (Shifter side) | 1 |
| (2) | * | RH foot peg relocation bracket (Brake side) | 1 |
| (3) | * | Brake pedal boss housing | 1 |
| (4) | * | Master cylinder extension bracket | 1 |
| (5) | * | Master cylinder protector bracket plate | 1 |
| (6) | * | Master cylinder push rod extension | 1 |
| (7) | * | Shift rod (longer) | 1 |
| (8) | * | Button head bolt M10x80mm (RH rear on frame) | 1 |
| (9) | * | Button head bolt M10x35mm (LH rear on frame & LH front on relocation bracket.) | 2 |
| (10) | * | Button head bolt M10x30mm (LH rear on relocation bracket) | 1 |
| (11) | * | Button head bolt M10x25mm (RH on relocation bracket) | 2 |
| (12) | * | Button head bolt M8x30mm (For master cylinder extension bracket) | 2 |
| (13) | * | Button head bolt M8x25mm (For master cylinder) | 2 |
| (14) | * | Hex socket head bolt M10x70mm (RH front on frame) | 1 |
| (15) | * | Hex socket head bolt M10x30mm (LH front on frame) | 1 |
| (16) | * | Nylon lock nuts M10 (Foot peg assembly to relocation bracket) | 4 |
| (17) | * | Nut M8 (Master cylinder push rod extension jam nut) | 1 |
| (18) | * | Flat washer M10 (For frame bolts) | 4 |
| (19) | * | Flat washer M8 (For master cylinder and extension bracket) | 4 |

* Part supplied with kit only and not available separately.



PREPARATION:

1. Clean all mounting surfaces before beginning installation.
2. Securely support the motorcycle in an upright position either by using a motorcycle-specific lift or by putting a motorcycle jack under the bottom of the frame.

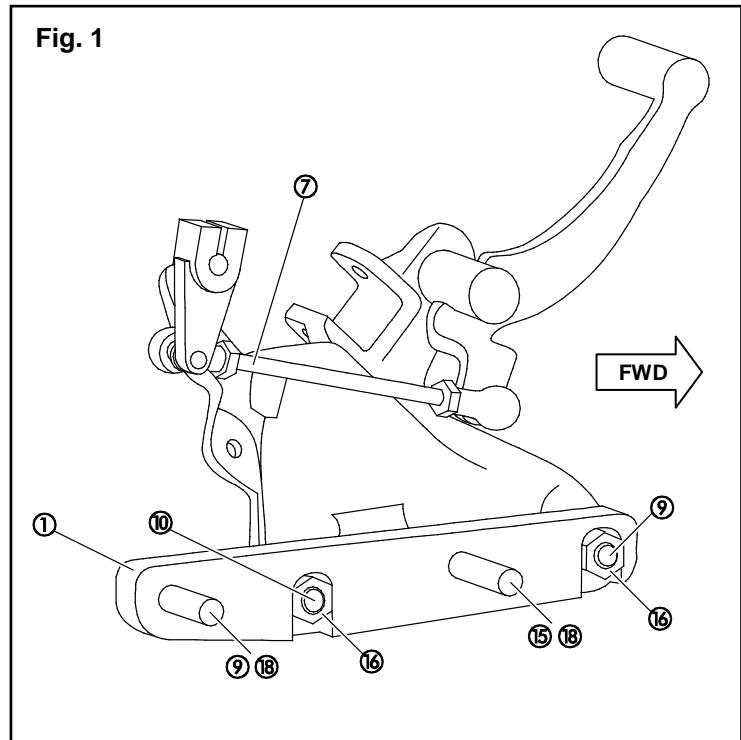
TIP: If using a jack from underneath the motorcycle, secure in a manner such that the shifter side foot peg mount (and sidestand) can be removed.

INSTALLATION:

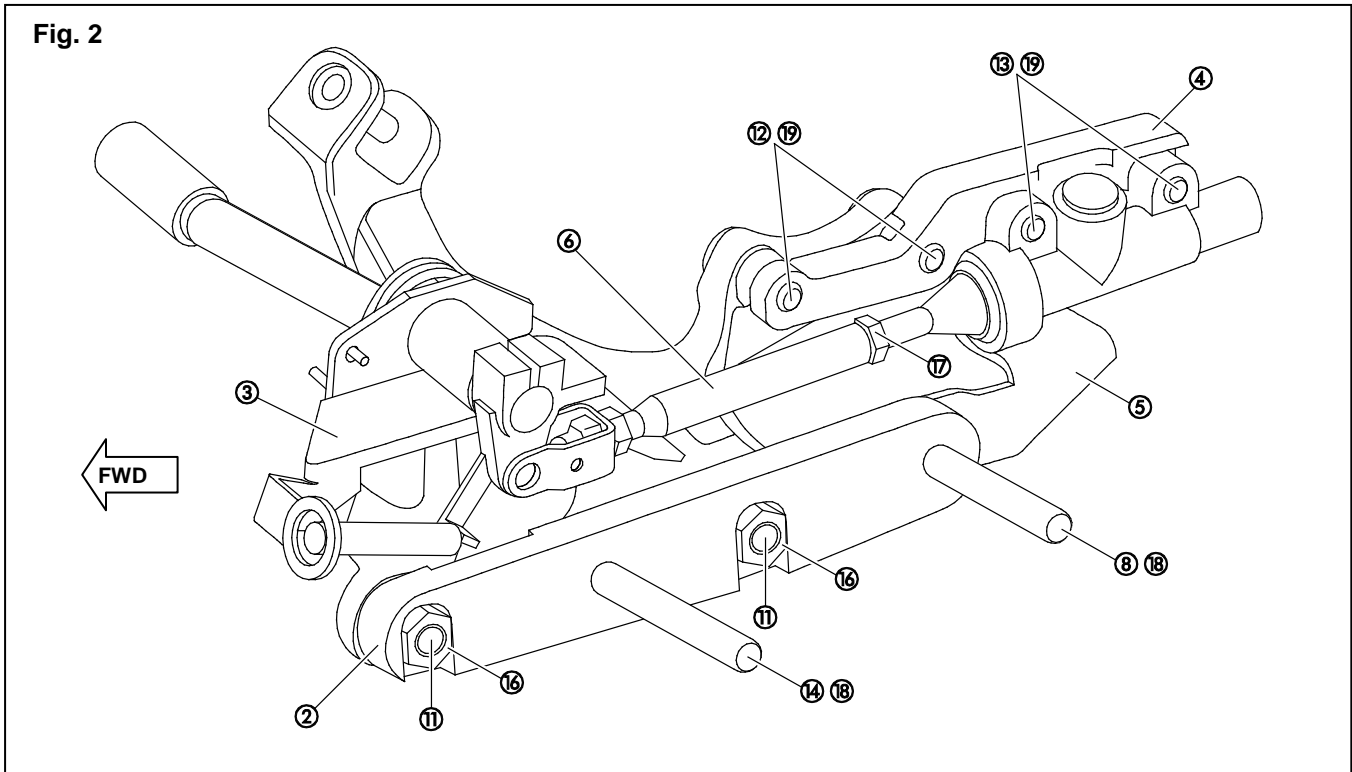
The XVS95CE Service Manual, part number LIT-11616-27-09, is required for these installation instructions.

Left (Shifter) Side:

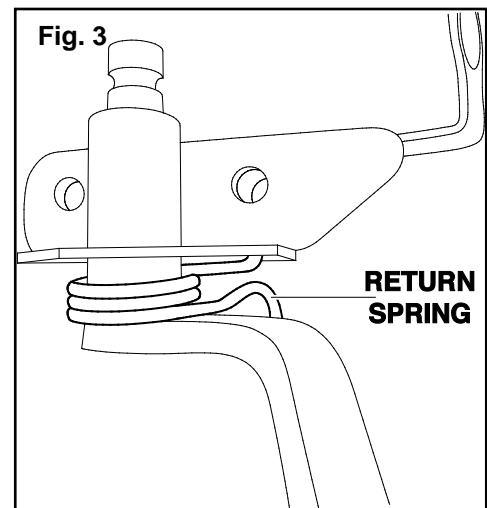
1. Remove the shift linkage from the engine shift shaft.
2. Remove the bolts securing the foot peg mount to the frame.
3. Remove the clip which secures the side-stand wire to the foot peg mount. Set the foot peg mount assembly aside.
4. Install the shift side relocation bracket (1) using the provided hardware (Fig 1). First apply Loctite® 242® to the threads, then install a 30mm hex socket head bolt (15) with an M10 washer (18) in the forward mounting location. After applying Loctite® to the threads, install a 35mm hex socket head button bolt (9) with an M10 washer (18) in the rearward mounting location. Torque both bolts to 48 Nm (4.8 m-kgf, 35 ft-lbf).
5. Install the shift-side foot peg mount to the relocation bracket using the provided hardware (Fig 1). In the forward mounting location, slide an M10 nylon lock nut (16) from underneath into the groove provided on the inside of the relocation bracket. Then use a 35mm hex socket button bolt (9) to secure the bracket. Repeat with an M10 nylon lock nut (16) and 30mm Hex socket button bolt (10) in the rearward mounting location. Tighten both bolts to 48 Nm (4.8 m-kgf, 35 ft-lbf).
6. Replace the standard shift rod with the longer shift rod (7) provided. Follow the procedure outlined in the service manual for installation and adjustment.
7. Secure the sidestand switch wire to the lower frame tube using a zip tie (not included in kit).



Right (Brake) Side:



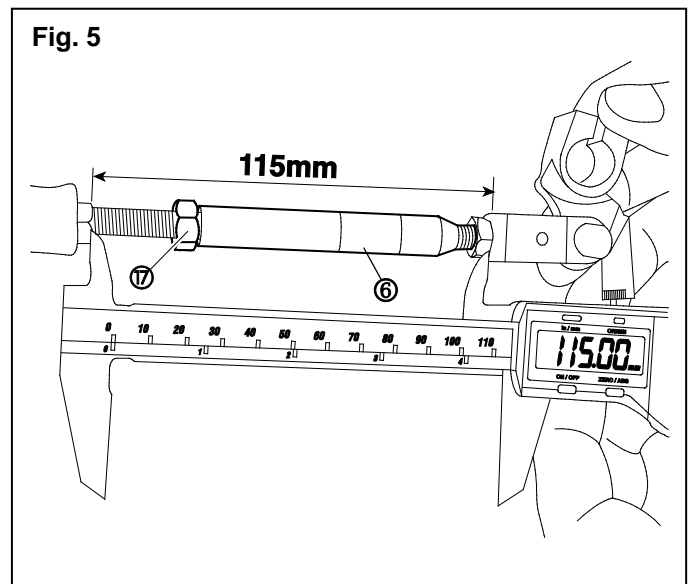
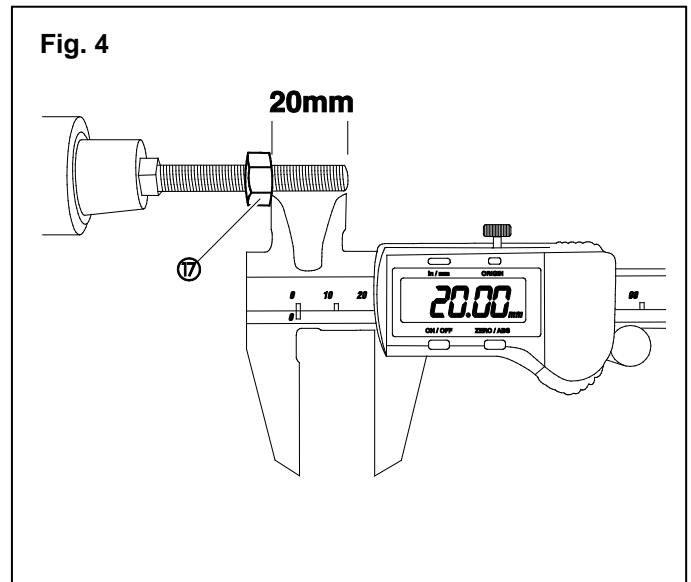
1. Remove the bolts securing the foot peg mount to the frame, and remove the brake side foot peg mount.
2. Remove brake switch wire from its guide tabs on the frame and then set the foot peg assembly aside.
3. Disconnect the brake switch wire from its connector (located in front of rear wheel above swing arm).
4. Remove the master cylinder from the foot peg mount.
5. Unclip the rearward portion of the brake switch spring and let spring rest on foot peg mount.
6. On the exposed end of the brake pedal shaft (inboard to the unit), use a permanent marker to mark the orientation of the shaft's splines and brake pedal linkage so it is easily visible. This orientation will be used for reassembly.
7. Remove the brake pedal linkage lever from the shaft. Remove brake pedal from the assembly by sliding it out of the brake pedal boss housing.
TIP: Note the orientation of the brake pedal rotational return spring before removing the pedal (Fig. 3). It will need to be reinstalled in the same fashion.
8. Loosen the jam nut, and then remove the linkage lever and the jam nut from the master cylinder shaft.



9. Using a permanent marker, place a mark 20mm from the exposed end of the master cylinder push rod (Fig. 4).
10. Thread the new 8mm hex nut (17) provided onto the master cylinder push rod until 20mm of thread is exposed. Thread the master cylinder extension onto the push rod all the way up to the jam nut and tighten the jam nut.
11. Thread the standard 8mm jam nut and the linkage lever (clevis with nut) onto the push rod extension (6). Adjust the distance between the push rod thread end and the clevis surface so that it is at 113~117 mm (Fig. 5).

TIP: There is about 20mm vertical brake pedal adjustment. 113mm will set the brake pedal in its lowest location; 117mm will set the brake pedal in its highest position.

12. On the foot peg mount, remove the brake switch from the original brake boss.
13. Remove the brake boss and install the accessory brake boss (3) using the original hardware. Torque the hardware to 23 Nm (2.3 m-kgf, 17 ft-lbf.)
14. Reinstall the brake pedal and rotational return spring into accessory brake boss in the same manner as it was removed in step 7.
15. Install the linkage lever onto the splined brake shaft. First align the marking on the splines as indicated in step 6 and then rotate the brake pedal up (counterclockwise looking inboard) one spline. Insert the brake pedal linkage lever onto the brake pedal spline all the way. Install the original pinch bolt and tighten it to 6.5 Nm (0.65 m-kgf, 5 ft-lbf).
16. Install the master cylinder extension bracket (4) on the foot peg mount as shown (Fig. 2) using the supplied 30mm button head bolts (12) with M8 washers (19). Finger-tighten the bolts.
17. Install the master cylinder and protective bracket plate (5) to the master cylinder extension bracket (4) as shown (Fig. 2) using the 25mm button head bolts (13) with M8 washers (19). Finger-tighten the bolts.
18. Check the brake pedal height and adjust if necessary. Tighten the master cylinder push rod jam nut at the linkage lever.



19. Install the brake-side foot peg relocation bracket (2) using the provided hardware and reusing the standard lock nuts. Use the 80mm hex socket button bolt (8) with M10 washer (18) in the rearward mounting location, but just finger-tighten at this time for bracket alignment. Use the 70mm hex socket bolt (14) with M10 washer (18) in the forward mounting location. Torque only the front bolt to 48 Nm (4.8 m-kgf, 35 ft-lbf).
20. Remove the rearward relocation bracket to frame mounting bolt (8) again with the M10 washer (18) and original lock nut to allow installation of the master cylinder protective plate.
21. In the forward mounting location of the relocation bracket, slide an M10 nylon lock nut (16) from underneath into the groove provided on the inside of the relocation bracket mounting hole. Then use a 25mm button head bolt (11) to secure the foot peg bracket. Repeat with an M10 nylon lock nut (16) and a 25mm button head bolt (11) in the rearward mounting hole. Finger-tighten the bolts.
22. Reinstall the relocation bracket bolt (8) which now secures the protective bracket atop the relocation bracket. Torque to 48 Nm (4.8 m-kgf, 35 ft-lbf).
23. Torque the 25mm foot peg mounting bolts (11) to 48 Nm (4.8 m-kgf, 35 ft-lbf).
24. Secure and torque the finger-tightened bolts which connect the foot peg mount to the master cylinder relocation bracket. Torque to 23 Nm (2.3 m-kgf, 17 ft-lbf.)
25. Secure and torque the finger-tightened bolts which connect the master cylinder relocation bracket to the master cylinder. Torque to 23 Nm (2.3 m-kgf, 17 ft-lbf.)
26. Reinstall brake light switch and route wiring the same as it was originally. Install the brake light switch spring to the linkage lever so that the open end of the hook is facing upwards.
27. Check the adjustment of the brake pedal height and the brake light function. Adjust as necessary.
28. Check the function of the rear brake. Make sure the pedal is firm when brakes are applied and the pedal travels smoothly with no contact or binding with other components.
29. Check to be sure the motorcycle shifts correctly. Adjust if necessary.

MAINTENANCE:

Periodically, check torque on all hardware.

CARE AND CLEANING:

Wash using a mild soap and water solution and a soft cloth.

CUSTOMER SERVICE:

For further information, see your Yamaha dealer.

ESTIMATED TIME TO INSTALL: 1.5 HRS